



somerset **village** &
community agents
In partnership with

MACMILLAN
CANCER SUPPORT

Hello - I'm Kristel your local Macmillan Agent



**Are you or
your family
affected by cancer?**

**I can help you
get the support
you need**

**Working with
the community,
making a difference
to the lives of
people living
with cancer**

**Do you live in a rural, isolated
area and need help with:**

- **Transport**
- **Benefits guidance**
- **Practical help**
- **Emotional support**

Kristel Van Der Schyff - Macmillan Agent



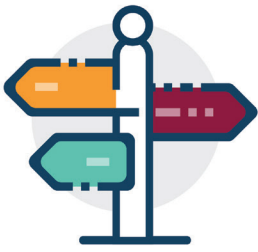
07798 703 321



www.somersetagents.org



macmillan-agent@somersetccc.org.uk



somerset **village** &
community agents

How can a Macmillan Agent help you?

Are you or your family affected by cancer? If you are living with cancer in the South Somerset and Mendip area our Macmillan Agent is here to help you access practical, financial and emotional support within your local community.

They can work with you to find long-term solutions to the issues you might be facing and can offer tailored support when you and your family need it.

Examples of how the Macmillan Agent can help are with:

- Transport
- Benefits guidance
- Practical help
- Emotional support

They can also put you in touch with a team of dedicated volunteers who offer help with practical household tasks and someone to talk to.

Macmillan and Community Council for Somerset - working together to support local people affected by cancer.

Contact Kristel the Macmillan Agent on **07798 703 321**
or email **macmillan-agent@somerssetrcc.org.uk**
to find out how she can help.

Macmillan Support Line: 0808 808 0000

This service is provided by:

Funded by and in partnership with:



CCS
people • place • enterprise

MACMILLAN
CANCER SUPPORT